

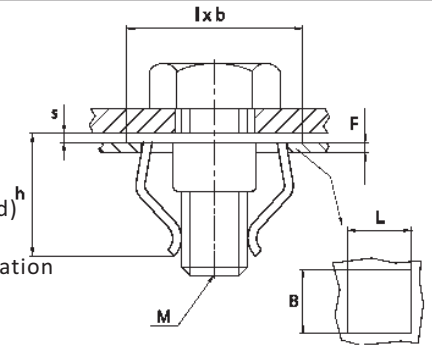


**CAP. 2**  
Screw Grommets  
Madreviti

## METAL SNAP IN NUTS(For metric bolts)



- ◆ To fix elements to a panel with holes using metric bolts
- ◆ The nut must be pushed in the hole, then the element is positioned above the nut, and lastly, put the bolt (and washer if needed) through it and screw
- ◆ Permits blind assembly and prevents nut rotation
- ◆ UNIT:mm



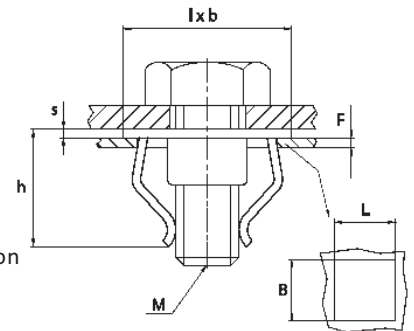
PART NO	THREAD SIZE (M)	PANEL(F) THICKNESS	HOLE SIZE (LXB)	L X WIDTH (LXB)	HEIGHT (H)	MATERIAL(S) THICKNESS	MATERIAL	PACKAGE
MOS212657001	M5	0,7-0,9	12x12	16x20	9,7	0,6	CS-5451	3000
MOS018709002	M6	0,8-2	13x9	16x20	11	0,8	CS-5500	2800
MOS020235001	M6	0,8-2	16x9*	18x22	13,2	1	CS-5410	2000

\*Hole: specific shape

## METAL SNAP IN NUTS(For metric bolts)



- ◆ To fix elements to a panel with holes using metric bolts
- ◆ The nut must be pushed in the hole, then the element is positioned above the nut, and lastly, put the bolt (and washer if needed) through it and screw
- ◆ Permits blind assembly and prevents nut rotation
- ◆ UNIT:mm

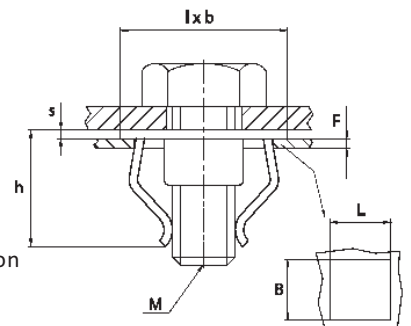


PART NO	THREAD SIZE (M)	PANEL(F) THICKNESS	HOLE SIZE (LXB)	L X WIDTH (LXB)	HEIGHT (H)	MATERIAL(S) THICKNESS	MATERIAL	PACKAGE
MOS137808001	M6	1,2-2	15,3-15,3	20x14,8	11	0,86	CS-G3	2000

## METAL SNAP IN NUTS(For metric bolts)



- ◆ To fix elements to a panel with holes using metric bolts
- ◆ The nut must be pushed in the hole, then the element is positioned above the nut, and lastly, put the bolt (and washer if needed) through it and screw
- ◆ Permits blind assembly and prevents nut rotation
- ◆ UNIT:mm

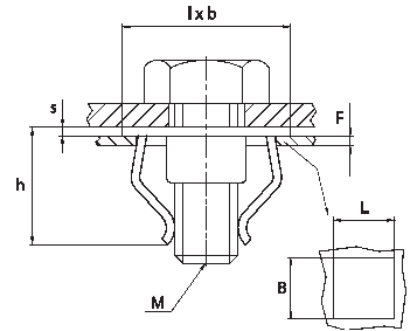


PART NO	THREAD SIZE (M)	PANEL(F) THICKNESS	HOLE SIZE (LXB)	L X WIDTH (LXB)	HEIGHT (H)	MATERIAL(S) THICKNESS	MATERIAL	PACKAGE
MOS135200002	M6	2,2-3	14,9x14,9	22,2x14,7	15,5	0,86	CS-5410	2500
MOS213591000	M6	3	12,2x13,2	18x14	14,2	0,8	CS-5410	1600

## METAL SNAP IN NUTS(For metric bolts)



- ◆ To fix elements to a panel with holes using metric bolts
- ◆ The nut must be pushed in the hole, then the element is positioned above the nut, and lastly, put the bolt (and washer if needed) through it and screw
- ◆ Permits blind assembly and prevents nut rotation
- ◆ UNIT:mm

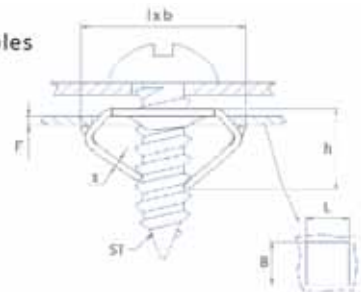


PART NO	THREAD SIZE (M)	PANEL(F) THICKNESS	HOLE SIZE (LXB)	L X WIDTH (LXB)	HEIGHT (H)	MATERIAL(S) THICKNESS	MATERIAL	PACKAGE
MOS203245000	M6	2,5-3	12,2x13,5	18x14	14,2	0,8	CS-5440	1600

## METAL SNAP IN NUTS(For ST screws)

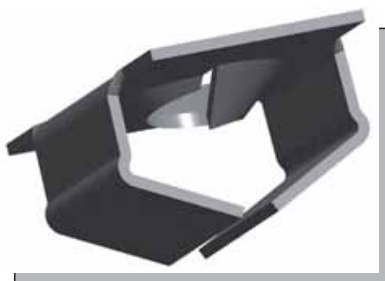


- ◆ To fix elements to a panel with square or oblong holes with metric ST screws
- ◆ The nut must be pushed in the hole, then the element is positioned over the nut and lastly the screw (and washer if needed) is put through it and tightened
- ◆ Permits blind assembly and prevents nut rotation
- ◆ UNIT:mm

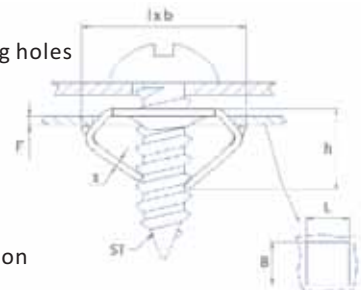


PART NO	SCREW SIZE (ST)	PANEL(F) THICKNESS	HOLE SIZE (LXB)	L X WIDTH (LXB)	HEIGHT (H)	MATERIAL(S) THICKNESS	MATERIAL	PACKAGE
MOS012036005	4,2	0,75-2	11x13	15,75x18	6,8	0,6	CS-3250	4000
MOS012415004	4,8	0,75-1	9x9	8x15	6,3	0,55	CS-3250	8500
MOS011463004	4,8	0,75-2	11x13	16x18	7	0,6	CS-3250	4000

## METAL SNAP IN NUTS(For ST screws)



- ◆ To fix elements to a panel with square or oblong holes with metric ST screws
- ◆ The nut must be pushed in the hole, then the element is positioned over the nut and lastly the screw (and washer if needed) is put through it and tightened
- ◆ Permits blind assembly and prevents nut rotation
- ◆ UNIT:mm

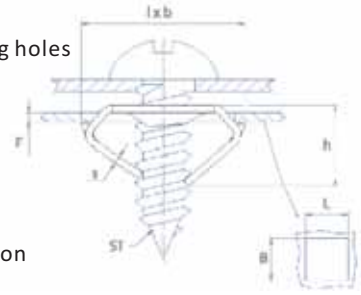


PART NO	SCREW SIZE (ST)	PANEL(F) THICKNESS	HOLE SIZE (LXB)	L X WIDTH (LXB)	HEIGHT (H)	MATERIAL(S) THICKNESS	MATERIAL	PACKAGE
MOS012991003	4,2	1,2-2	9x9	8x15	7	0,4	CS-3250	9000

## METAL SNAP IN NUTS(For ST screws)



- ◆ To fix elements to a panel with square or oblong holes with metric ST screws
- ◆ The nut must be pushed in the hole, then the element is positioned over the nut and lastly the screw (and washer if needed) is put through it and tightened
- ◆ Permits blind assembly and prevents nut rotation
- ◆ UNIT:mm

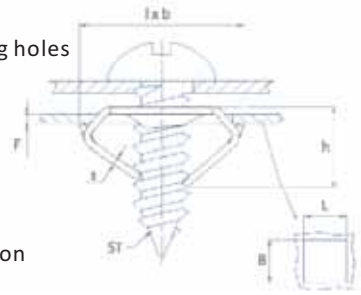


PART NO	SCREW SIZE (ST)	PANEL(F) THICKNESS	HOLE SIZE (LXB)	L X WIDTH (LXB)	HEIGHT (H)	MATERIAL(S) THICKNESS	MATERIAL	PACKAGE
MOS015548003	4,2	0,8-1,5	7x9	8,6x11	5,6	0,5	CS-3250	7000

## METAL SNAP IN NUTS(For ST screws)



- ◆ To fix elements to a panel with square or oblong holes with metric ST screws
- ◆ The nut must be pushed in the hole, then the element is positioned over the nut and lastly the screw (and washer if needed) is put through it and tightened
- ◆ Permits blind assembly and prevents nut rotation
- ◆ UNIT:mm

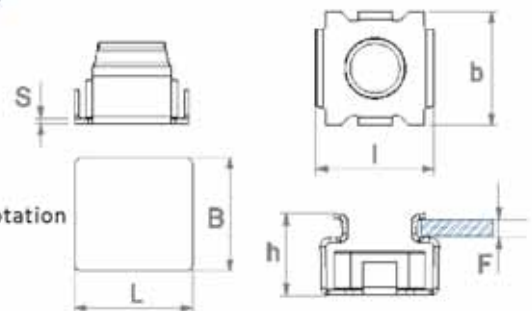
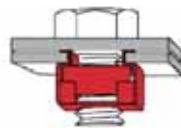


PART NO	SCREW SIZE (ST)	PANEL(F) THICKNESS	HOLE SIZE (LXB)	L X WIDTH (LXB)	HEIGHT (H)	MATERIAL(S) THICKNESS	MATERIAL	PACKAGE
MOS207999001	4,8	1,5-2	12x15	16x26	17,6	0,6	CS-4004	1500

## METAL SNAP IN NUTS(Metric cage nuts)



- ◆ To fix elements to panels with square holes using metric bolts
- ◆ The nut must be pushed in the hole, then the element is positioned over it, and lastly the bolt (and washer if needed) is installed and tightened
- ◆ Permits blind assembly and prevents nut rotation
- ◆ UNIT:mm

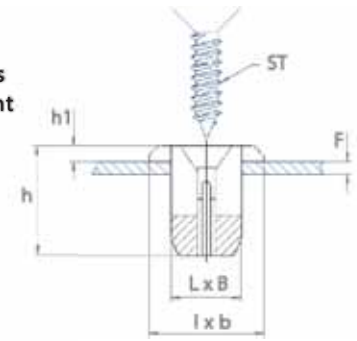


PART NO	THREAD SIZE	PANEL (F) THICKNESS	HOLE SIZE (LXB)	HEIGHT (H)	LENGTH (L)	WIDTH (B)	MATERIAL (S) THICKNESS	MATERIAL	PACKAGE
MOS230285000	M3	0,3-0,9	6,7x6,7	5,2	9,7	9,3	0,3	CS-3250	10000
MOS230286000	M3	1,0-1,6	6,7x6,7	5,9	9,7	9,3	0,3	CS-3250	10000
MOS230287000	M4	0,5-1,6	6,7x6,7	7,1	10,3	10	0,45	CS-3250	5000
MOS230288000	M5	0,7-1,6	9,5x9,5	8,6	13,5	13,1	0,5	CS-3250	3000
MOS230289000	M5	1,7-2,7	9,5x9,5	9,6	13,5	13,1	0,5	CS-3250	3000
MOS230290000	M6	0,7-1,6	9,5x9,5	8,6	13,5	13,1	0,5	CS-3250	3000
MOS230291000	M6	1,7-2,7	9,5x9,5	9,6	13,5	13,1	0,5	CS-3250	3000
MOS230292000	M8	0,7-1,7	12,7x12,7	10,4	17,5	16,7	0,6	CS-3250	1500
MOS230293000	M8	1,8-3,0	12,7x12,7	11,6	17,5	16,7	0,6	CS-3250	1500
MOS230294000	M10	0,7-1,7	12,7x12,7	10,4	17,5	16,7	0,6	CS-3250	1500
MOS230295000	M10	1,8-3,0	12,7x12,7	11,6	17,5	16,7	0,6	CS-3250	1500

## PLASTIC SNAP IN NUTS(For square holes)



- ◆ To fix elements with metric screws to a panel with holes
- ◆ The nut is snapped into the hole, the hole in the element is positioned above the nut and finally the screw (and washer if needed) is inserted through the element into the nut and tightened
- ◆ The nut tapping is done by the screw
- ◆ UNIT:mm

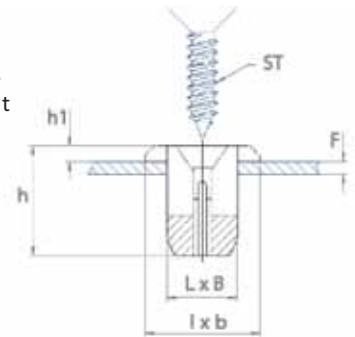


PART NO	SCREW SIZE (ST)	PANEL(F) THICKNESS	HOLE SIZE (LxB)	L X WIDTH (LxB)	HEIGHT (H)	HEAD(H1) THICKNESS	MATERIAL	PACKAGE
MOS053853001	4,2	0,5-3	7,2x7,2	9,5x9,5	8,3	1,2	PA66-BI	5500

## PLASTIC SNAP IN NUTS(For square holes)



- ◆ To fix elements with metric screws to a panel with holes
- ◆ The nut is snapped into the hole, the hole in the element is positioned above the nut and finally the screw (and washer if needed) is inserted through the element into the nut and tightened
- ◆ The nut tapping is done by the screw
- ◆ UNIT:mm

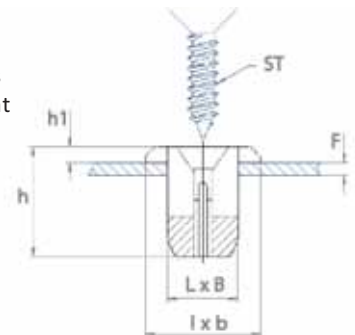


PART NO	SCREW SIZE (ST)	PANEL(F) THICKNESS	HOLE SIZE (LxB)	L X WIDTH (LxB)	HEIGHT (H)	HEAD(H1) THICKNESS	MATERIAL	PACKAGE
MOS207747000	4,2/4,8/5,2	0,7-1	7x7	12x12	12	1,0	PA66-Na	10000
MOS015197002	Hi-Lo 5,8	0,8-1,2	8,2x8,2	11x11	12	0,8	PA6-Na	2000
MOS019503000	Hi-Lo 5,8	1,2-1,6	8,2x8,2	11x11	10	0,8	PA6-Na	2000

## PLASTIC SNAP IN NUTS(For square holes)



- ◆ To fix elements with metric screws to a panel with holes
- ◆ The nut is snapped into the hole, the hole in the element is positioned above the nut and finally the screw (and washer if needed) is inserted through the element into the nut and tightened
- ◆ The nut tapping is done by the screw
- ◆ UNIT:mm

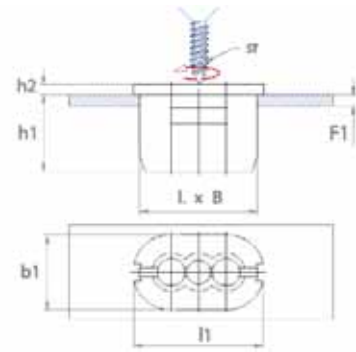
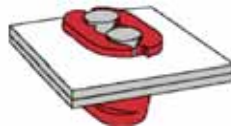


PART NO	SCREW SIZE (ST)	PANEL(F) THICKNESS	HOLE SIZE (LxB)	L X WIDTH (LxB)	HEIGHT (H)	HEAD(H1) THICKNESS	MATERIAL	PACKAGE
MOS055995000	4,2	0,6-3	8,2x8,2	12,8x12,8	12,2	2,2	PA66-Na	2500
MOS055995001	4,2	0,6-3	8,2x8,2	12,8x12,8	12,2	2,2	PA66-BI	2500

## PLASTIC SNAP IN NUTS(For square holes)



- ◆ To fix elements with metric screws to a panel with holes
- ◆ The nut is snapped into the hole, the hole in the element is positioned above the nut and finally the screw (and washer if needed) is inserted through the element into the nut and tightened
- ◆ The nut tapping is done by the screw
- ◆ Permits blind assembly and prevents nut rotation
- ◆ UNIT:mm

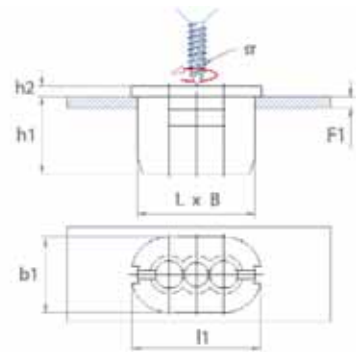


PART NO	SCREW SIZE (ST)	PANEL (F) THICKNESS	HOLE SIZE (LXB)	LENGTH (L1)	WIDTH (B1)	HEIGHT (H1)	HEAD (H2) THICKNESS	MATERIAL	PACKAGE
MOS055975000	4,2	0,6 - 3	7,2x14	15,2	8,8	10,2	1,2	PA66-Na	10000

## PLASTIC SNAP IN NUTS(For square holes)

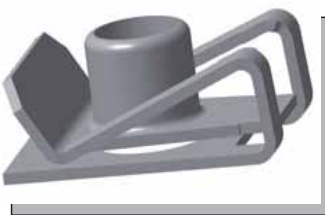


- ◆ To fix elements with metric screws to a panel with holes
- ◆ The nut is snapped into the hole, the hole in the element is positioned above the nut and finally the screw (and washer if needed) is inserted through the element into the nut and tightened
- ◆ The nut tapping is done by the screw
- ◆ Permits blind assembly and prevents nut rotation
- ◆ UNIT:mm

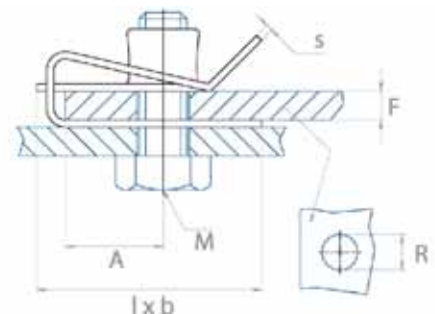


PART NO	SCREW SIZE (ST)	PANEL (F) THICKNESS	HOLE SIZE (LXB)	LENGTH (L1)	WIDTH (B1)	HEIGHT (H1)	HEAD (H2) THICKNESS	MATERIAL	PACKAGE
MOS053670002	4,2/4,8	0,5 - 1,2	14,2 x 7,2	20	13	17	2	PA66-BI	1500

## METAL SNAP ON NUTS(Universal- For metric bolts)



- ◆ To fix elements with metric bolts in a panel with holes
- ◆ The nut is slid onto the panel edge and over the panel hole (or through a second hole when fitted mid panel)
- ◆ The element is positioned over the nut and finally the bolt (and washer if needed) is inserted the element into the nut and tightened
- ◆ Design allows variable panel thickness with the thread remaining parallel to the surface
- ◆ If nut to be pre-assembled, use the version with the retaining tab (to prevent the nut from moving during transport for example)
- ◆ UNIT:mm



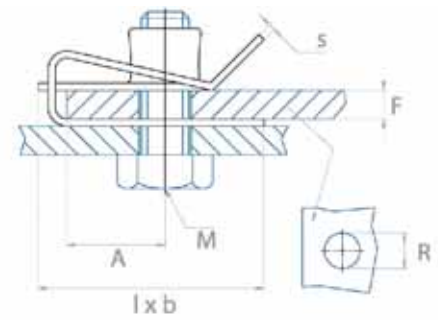
PART NO	THREAD SIZE (M)	PANEL(F) THICKNESS	L X WIDTH (LXB)	MAX (A) DISTANCE	HOLE (R) DIAMETER	MATERIAL(S) THICKNESS	MATERIAL	PACKAGE
MOS054044011	M5	0,5-4	15,2x12	6,8	6	0,6	CS-5440	5500
MOS054044024	M5	0,5-4	15,2x12	6,8	6	0,6	CS-3250	5 000
MOS206960004	M5	0,5-4	19,9x13,8	10	7,5	0,6	CS-3250	2000
MOS013176010	M6	0,5-4	24,1x16	11,5	7	0,8	CS-5451	1500
MOS013176016	M6	0,5-4	24,1x16	11,5	7	0,8	CS-325	1500
MOS013965006	M8	0,8-4	28x18	13	9	1	CS-3250	1200
MOS013965008	M8	0,8-4	28x18	13	9	1	CS-5412	1200



## METAL SNAP ON NUTS(Universal- For metric bolts)



- ◆ To fix elements with metric bolts in a panel with holes
- ◆ The nut is slid onto the panel edge and over the panel hole (or through a second hole when fitted mid panel)
- ◆ The element is positioned over the nut and finally the bolt (and washer if needed) is inserted into the nut and tightened
- ◆ Design allows variable panel thickness with the thread remaining parallel to the surface
- ◆ If nut to be pre-assembled, use the version with the retaining tab (to prevent the nut from moving during transport for example)
- ◆ UNIT:mm

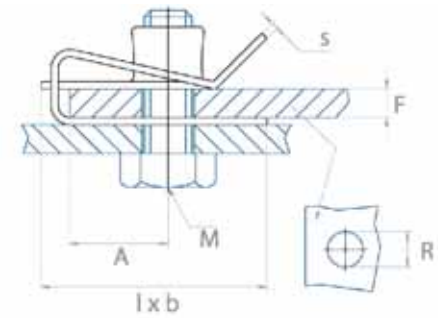


PART NO	THREAD SIZE (M)	PANEL(F) THICKNESS	LX WIDTH (LXB)	MAX (A) DISTANCE	HOLE (R) DIAMETER	MATERIAL(S) THICKNESS	MATERIAL	PACKAGE
MOS016205003	M5	0,8-4,3	20,8x15	10,5	7,5	0,6	CS-5440	2300
MOS016205004	M5	0,8-4,3	20,8x15	10,5	7,5	0,6	CS-3250	2300
MOS130793007	M6	0,5-4	22,3x15	11	8,5	0,8	CS-3250	1800
MOS053313010	M8	0,5-4	25,5x17	13	11,2	1	CS-3250	1000

## METAL SNAP ON NUTS(Universal- For metric bolts)



- ◆ To fix elements with metric bolts in a panel with holes
- ◆ The nut is slid onto the panel edge and over the panel hole (or through a second hole when fitted mid panel)
- ◆ The element is positioned over the nut and finally the bolt (and washer if needed) is inserted the element into the nut and tightened
- ◆ Design allows variable panel thickness with the thread remaining parallel to the surface
- ◆ If nut to be pre-assembled, use the version with the retaining tab (to prevent the nut from moving during transport for example)
- ◆ UNIT:mm

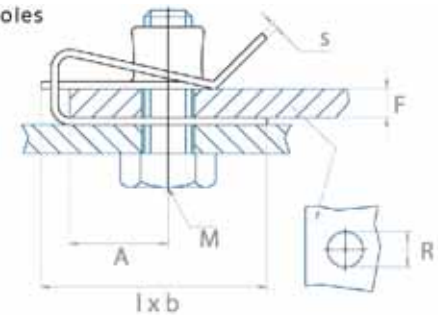


PART NO	THREAD SIZE (M)	PANEL(F) THICKNESS	LX WIDTH (LXB)	MAX (A) DISTANCE	HOLE (R) DIAMETER	MATERIAL(S) THICKNESS	MATERIAL	PACKAGE
MOS151854000	M6	0,8-4	24,3x15	12,5	10	0,8	CS-5440	2000
MOS151838002	M6	0,8-4	30,3x15	18,5	10	0,8	CS-3250	1600
MOS138330004	M8	1,5-5,5	24,9x17	13	11,7	1	CS-3250	1200
MOS138331003	M10	1,5-5,5	32,5x24,5	17,5	15	1,4	CS-3250	700

## METAL SNAP ON NUTS(Universal- For metric bolts)

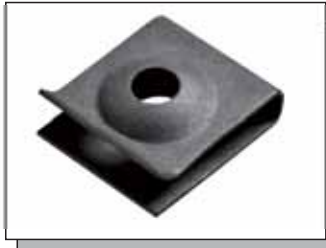


- ◆ To fix elements with metric bolts in a panel with holes
- ◆ The nut is slid onto the panel edge and over the panel hole (or through a second hole when fitted mid panel)
- ◆ The element is positioned over the nut and finally the bolt (and washer if needed) is inserted the element into the nut and tightened
- ◆ Design allows variable panel thickness with the thread remaining parallel to the surface
- ◆ If nut to be pre-assembled, use the version with the retaining tab (to prevent the nut from moving during transport for example)
- ◆ UNIT:mm

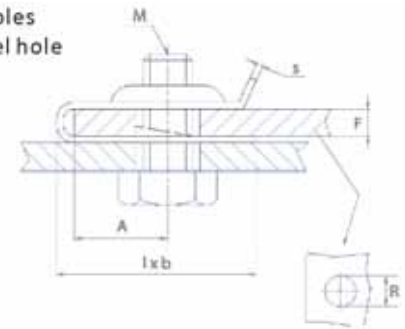


PART NO	THREAD SIZE (M)	PANEL(F) THICKNESS	LX WIDTH (LXB)	MAX (A) DISTANCE	HOLE (R) DIAMETER	MATERIAL(S) THICKNESS	MATERIAL	PACKAGE
MOS015371003	M4	0,8-4,3	16,9x15	7	7	0,5	CS-5410	3000
MOS015463001	M4	0,8-4,3	16,9x15	7	7	0,5	Sst	3000
MOS015501003	M4	0,8-4,3	16,9x17	7	8	0,6	CS-3250	2500

## METAL SNAP ON NUTS(For metric bolts)



- ◆ To fix elements with metric screws to a panel with holes
- ◆ The nut is slid onto the panel edge and over the panel hole (or through a second hole when fitted mid panel)
- ◆ The element is positioned over the nut and finally the bolt (and washer if needed) is inserted the element into the nut and tightened
- ◆ Version with retaining tab, ideal for pre-assembly
- ◆ Metric snail gives good torque resistance but less than metric tapped barrel impression
- ◆ UNIT:mm

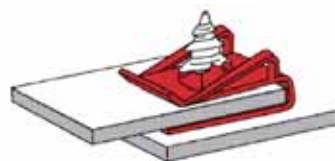
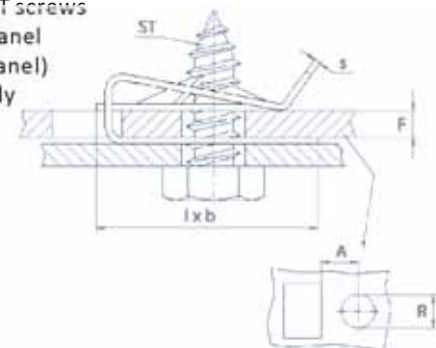


PART NO	THREAD SIZE (M)	PANEL(F) THICKNESS	L X WIDTH (LXB)	MAX (A) DISTANCE	HOLE (R) DIAMETER	MATERIAL(S) THICKNESS	MATERIAL	PACKAGE
MOS015095002	M4	0,5-1,5	13 x 11	6	6,5	0,5	CS-4001	9500
MOS014885002	M4	1,5 - 2	12,75 x 11	6	6,5	0,5	CS-5000	9000
MOS015617002	M5	0,6-1,7	15,7 x 14,5	7,5	8	0,7	CS-4001	5000
MOS015617003	M5	0,6-1,7	15,7 x 14,5	7,5	8	0,7	CS-3250	5000
MOS016770001	M6	2	24,8 x 16	11	6,7	0,8	CS-5410	2800

## METAL SNAP ON NUTS(Universal- For ST screws)



- ◆ To fix elements to a panel with holes with metal ST screws
- ◆ The nut is slid onto the panel edge and over the panel hole (or through a second hole when fitted mid panel)
- ◆ The element is positioned over the nut and finally the bolt (and washer if needed) is inserted the element into the nut and tightened
- ◆ Design allows variable panel thickness with the thread remaining parallel to the surface
- ◆ UNIT:mm



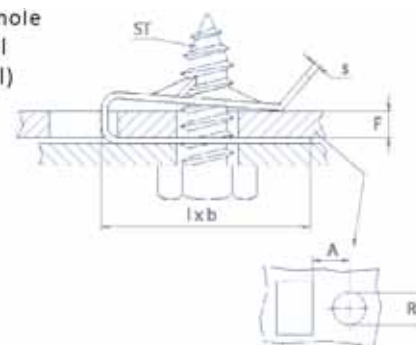
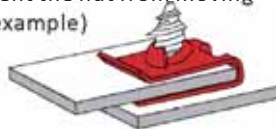
PART NO	SCREW SIZE (ST)	PANEL(F) THICKNESS	L X WIDTH (LXB)	MAX (A) DISTANCE	HOLE (R) DIAMETER	MATERIAL(S) THICKNESS	MATERIAL	PACKAGE
MOS014519003	4,2	0,5 - 4,5	20 x 15	10,5	6	0,6	CS-5412	3500
MOS014519005	4,2	0,5 - 4,5	20 x 15	10,5	6	0,6	CS-3250	3000
MOS014043008	4,2	0,5 - 4,5	20 x 15	10,5	6	0,6	CS-4001	3000
MOS018594002	4,2	0,5 - 4,5	20 x 15	10,5	6	0,6	CS-5451	2700



## METAL SNAP ON NUTS(For ST screws)



- ◆ To fix elements with metal ST screws to a panel with hole
- ◆ The nut is slid onto the panel edge and over the panel hole (or through a second hole when fitted mid panel)
- ◆ The element is positioned over the nut and finally the bolt (and washer if needed) is inserted the element into the nut and tightened
- ◆ If nut to be pre-assembled, use the version with the retaining tab (to prevent the nut from moving during transport for example)
- ◆ UNIT:mm

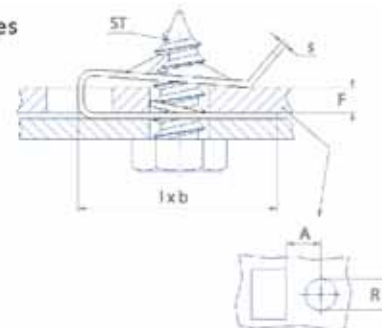


PART NO	SCREW SIZE (ST)	PANEL(F) THICKNESS	LX WIDTH (LXB)	MAX (A) DISTANCE	HOLE (R) DIAMETER	MATERIAL(S) THICKNESS	MATERIAL	PACKAGE
MOS011912002	3,5	2,5	12,5x11	5,8	6	0,5	CS-3250	8000
MOS013199003	3,5	3-4	15,5x11	6,5	6	0,5	CS-5000	6000
MOS013695002	3,5	3,75-5,2	12x11	5	5	0,5	CS-3250	7500
MOS014105002	3,9	2,3-2,8	13x11	8	5	0,5	CS-3250	7000
MOS013778002	4,2	0,7 - 1,75	16,5 x 8	7,5	5	0,5	CS-5410	7500
MOS013778003	4,2	0,7 - 1,75	16,5 x 8	7,5	5	0,5	CS-3250	7500
MOS012893006	4,2	1,5 - 2	12,7 x 11	6	6	0,7	CS-3250	6000
MOS012893007	4,2	1,5 - 2	12,7 x 11	6	6	0,7	CS-5500	6000
MOS013699001	4,2	1,75 - 2,25	19,1 x 16	11	6	0,6	Sst	3500
MOS151658004	4,8	1-3	19,5 x 12,5	9	6	0,5	CS-3250	5000
MOS012763003	4,8	1,5 - 2	25 x 20,5	14	6	0,5	CS-5440	3000
MOS211439000	4,8	2 - 3,5	15x12	7	6	0,7	CS-3250	4000
MOS054649001	4,8	3-4	15,5x11	6	6,2	0,5	Sst	4000

## METAL SNAP ON NUTS(For ST screws / With retaining tab)



- ◆ To fix elements with metal ST screws to a panel with holes
- ◆ The nut is slid onto the panel edge and over the panel hole (or through a second hole when fitted mid panel)
- ◆ The element is positioned over the nut and finally the bolt (and washer if needed) is inserted the element into the nut and tightened
- ◆ Version with retaining tab, ideal for pre-assembly
- ◆ UNIT:mm

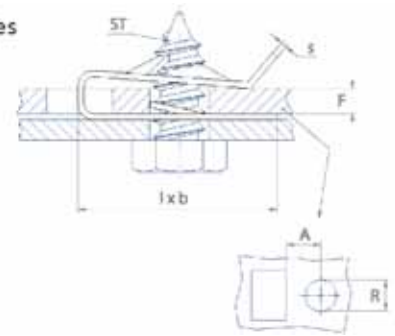


PART NO	SCREW SIZE (ST)	PANEL(F) THICKNESS	LX WIDTH (LXB)	MAX (A) DISTANCE	HOLE (R) DIAMETER	MATERIAL(S) THICKNESS	MATERIAL	PACKAGE
MOS013825003	3,5	2-2,75	12,5x11	5,8	6,8	0,5	CS-3250	4500
MOS014333002	3,5	2,5	12,5x11	5,8	5,5	0,5	CS-5451	4000
MOS011347002	3,9	1-3,0	16x11	7	7,2	0,5	CS-3250	7000
MOS012240005	4,2	0,5-1,5	13x11	6	6,8	0,5	CS-5450	10000
MOS012240004	4,2	0,5-1,5	13x11	6	6,8	0,5	CS-3250	6500
MOS012757003	4,2	0,5-1,75	16,6x11	7,5	7,2	0,6	CS-3250	8000
MOS012367002	4,2	1-2,5	12,6x8	5,5	5	0,6	Sst	8000
MOS215635001	4,2	1,25-2	20,7x13	10,8	8	0,7	CS-3250	4500
MOS055111000	4,2	1,5-2,5	13,5x10	6,5	6,2	0,5	Sst	5000
MOS055639007	4,2	2-3	13,8x13	6,8	6	0,5	CS-4004	5000
MOS013219004	4,8	0,5-1,7	24,9x11	16	7,2	0,5	CS-3250	3000
MOS013219005	4,8	0,5-1,7	24,9x11	16	7,2	0,5	CS-4001	3000
MOS013133005	4,8	0,6-1,7	14,7x11	7,2	7,2	0,7	CS-3250	8000
MOS013133006	4,8	0,6-1,7	14,7x11	7,2	7,2	0,7	CS-4001	8000
MOS015954002	4,8	1,7-2,3	16,6x11	7,2	7,2	0,6	CS-5440	7000
MOS011967002	4,8	2 - 3	16x11	6,75	7,2	0,5	CS-5410	7000
MOS013806004	5,5	3-4	23,7x16	12	8,7	0,7	CS-5451	1400

## METAL SNAP ON NUTS(For ST screws / With retaining tab)



- ◆ To fix elements with metal ST screws to a panel with holes
- ◆ The nut is slid onto the panel edge and over the panel hole (or through a second hole when fitted mid panel)
- ◆ The element is positioned over the nut and finally the bolt (and washer if needed) is inserted into the nut and tightened
- ◆ Version with retaining tab, ideal for pre-assembly
- ◆ UNIT:mm

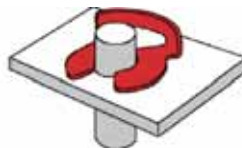
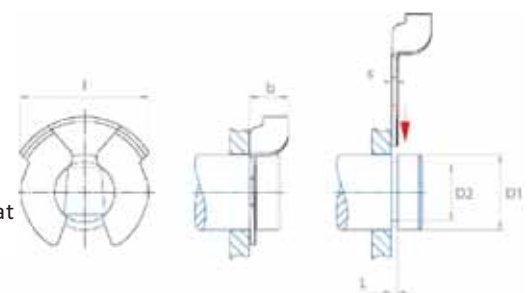


PART NO	SCREW SIZE (ST)	PANEL(F) THICKNESS	LX WIDTH (LXB)	MAX (A) DISTANCE	HOLE (R) DIAMETER	MATERIAL(S) THICKNESS	MATERIAL	PACKAGE
MOS020857003	4,2	2-3,5	16x12	8	6,5	0,5	CS-3250	5000

## SHAFT RETAINERS (C clip for grooved shafts)



- ◆ To lock grooved shafts in panels or any elements with a flat surface
- ◆ The clip must be pushed into the groove in the shaft from the side
- ◆ The first design for grooves at any position on the shaft
- ◆ The second design needs the groove to be at a certain distance from the shaft end
- ◆ UNIT:mm

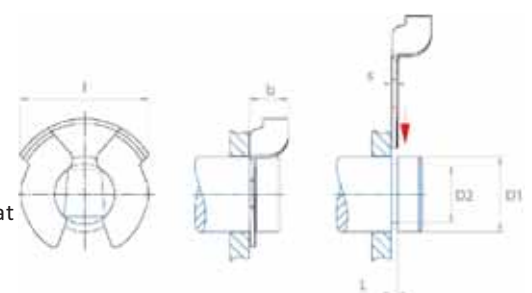


PART NO	SHAFT (D1) DIAMETER	GROOVE(D2) DIAMETER	GROOVE (L) WIDTH	CLIP SIZE (LXB)	MATERIAL(S) THICKNESS	MATERIAL	PACKAGE
MOS054518005	6	5	0,74-0,75	11 x 4	0,5	CS-ZnNi-BI	7500
MOS013973004	8	6	1,0-1,2	16 x 4	0,5	CS-4001	6500
MOS151255001	10-12	8	1,05	16 x 5	0,5	CS-5000	6000
MOS018177003	16	12	1,25-1,45	23,6 x 7	0,8	CS-3250	3000

## SHAFT RETAINERS (C clip for grooved shafts)



- ◆ To lock grooved shafts in panels or any elements with a flat surface
- ◆ The clip must be pushed into the groove in the shaft from the side
- ◆ The first design for grooves at any position on the shaft
- ◆ The second design needs the groove to be at a certain distance from the shaft end
- ◆ UNIT:mm

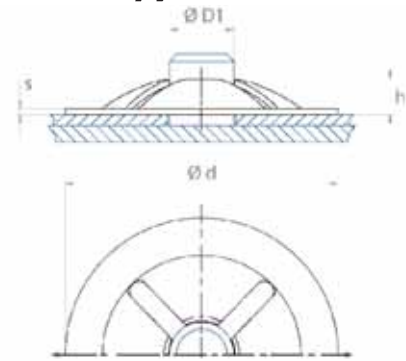


PART NO	SHAFT (D1) DIAMETER	GROOVE(D2) DIAMETER	GROOVE (L) WIDTH	CLIP SIZE (LXB)	MATERIAL(S) THICKNESS	MATERIAL	PACKAGE
MOS054633006	6	5	1,2-1,3	11,2 x 3	0,4	CS-3250	5000
MOS054516002	8	6	1,1-1,2	14 x 3	0,4	CS-ZnNi	4000

## SHAFT RETAINERS (Circular push on fix - Light duty)



- ◆ To lock smooth shafts in panels or any elements with a flat surface
- ◆ The clip must be pushed onto the shaft from the top with a magnetic cylindrical hollow tool
- ◆ For smooth (not threaded) shafts in metal or plastic
- ◆ For light duty applications
- ◆ UNIT:mm

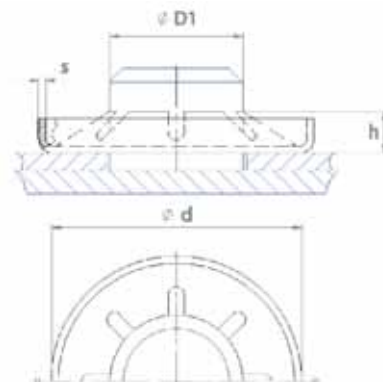
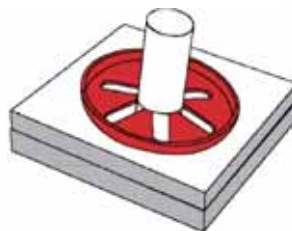


PART NO	STUD SIZE (ØD1)	OUTSIDE(ØD) DIAMETER	HEIGHT (H)	MATERIAL(S) THICKNESS	MATERIAL	PACKAGE
MOS011876004	2-2,1	9,5	1,3	0,3	CS-3250	35000
MOS051856006	2,5-2,7	9,5	1,3	0,25	CS-3250	10000
MOS051857006	3-3,2	9,5	1,2	0,25	CS-ZnNi	10000
MOS051858007	3,5-3,7	9,5	1,1	0,25	CS-3250	10000
MOS051859002	4-4,1	9,5	1	0,25	CS-3250	10000
MOS051833009	4,5-4,7	13	1	0,35	CS-3350	7000
MOS052675006	4,9-5,1	13	1,3	0,5	CS-3250	7500
MOS051834003	5,5	13	1,2	0,35	CS-ZnNi	8000
MOS051835014	6-6,2	13,1	1,1	0,35	CS-ZnNi	8000
MOS019236004	6-6,1	22	2,7	0,45	CS-3250	8000
MOS015212001	6,5-6,7	20,5	2,2	0,45	CS-5410	7000
MOS014343005	8,41-8,5	20	2,7	0,7	CS-3250	7500

## SHAFT RETAINERS (Circular push on fix - Heavy duty)



- ◆ To lock smooth shafts in panels or any elements with a flat surface
- ◆ The clip must be pushed onto the shaft from the top with a magnetic cylindrical hollow tool
- ◆ For smooth (not threaded) shafts in metal
- ◆ Designed to reach a higher performance than the regular version
- ◆ UNIT:mm

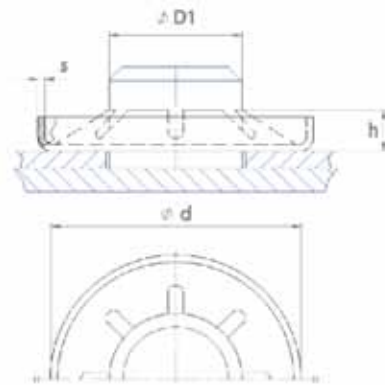


PART NO	STUD SIZE (ØD1)	OUTSIDE(ØD) DIAMETER	HEIGHT (H)	MATERIAL (S) THICKNESS	MATERIAL	PACKAGE
MOS060655001	4	9,6	1,6	0,3	CS-3250	26000

## SHAFT RETAINERS (Circular push on fix - Heavy duty)



- ◆ To lock smooth shafts in panels or any elements with a flat surface
- ◆ The clip must be pushed onto the shaft from the top with a magnetic cylindrical hollow tool
- ◆ For smooth (not threaded) shafts in metal
- ◆ Designed to reach a higher performance than the regular version
- ◆ UNIT:mm

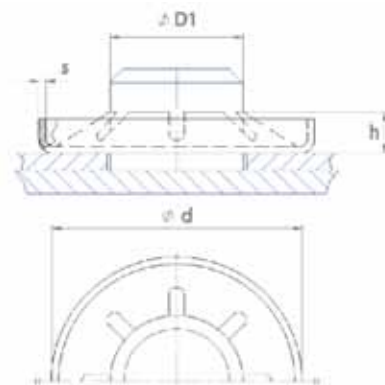


PART NO	STUD SIZE (ØD1)	OUTSIDE(ØD) DIAMETER	HEIGHT (H)	MATERIAL (S) THICKNESS	MATERIAL	PACKAGE
MOS138603002	4	11	1,1	0,25	CS-3250	10000
MOS138605003	5	16	1,32	0,38	CS-3250	5000
MOS138608003	6	13,5	1,8	0,41	CS-3250	5000
MOS138613002	8	15,9	1,8	0,51	CS-5000	5000
MOS138617000	10	19,1	1,4	0,41	CS-5000	5000
MOS138618003	12	22,1	2,7	0,86	CS-3250	5500

## SHAFT RETAINERS (Circular push on fix - Heavy duty)



- ◆ To lock smooth shafts in panels or any elements with a flat surface
- ◆ The clip must be pushed onto the shaft from the top with a magnetic cylindrical hollow tool
- ◆ For smooth (not threaded) shafts in metal
- ◆ Designed to reach a higher performance than the regular version
- ◆ UNIT:mm

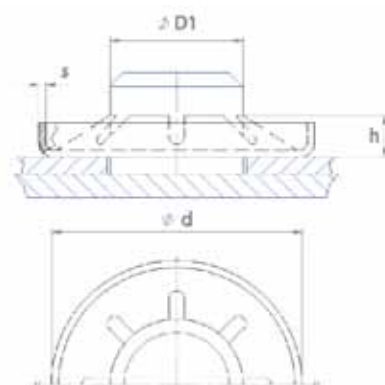


PART NO	STUD SIZE (ØD1)	OUTSIDE(ØD) DIAMETER	HEIGHT (H)	MATERIAL (S) THICKNESS	MATERIAL	PACKAGE
MOS020586001	5	12	0,9	0,3	Sst	25000
MOS054947009	6	13,4	1,0	0,3	CS-3250	106000

## SHAFT RETAINERS (Circular push on fix - Heavy duty)



- ◆ To lock smooth shafts in panels or any elements with a flat surface
- ◆ The clip must be pushed onto the shaft from the top with a magnetic cylindrical hollow tool
- ◆ For smooth (not threaded) shafts in metal
- ◆ Designed to reach a higher performance than the regular version
- ◆ UNIT:mm

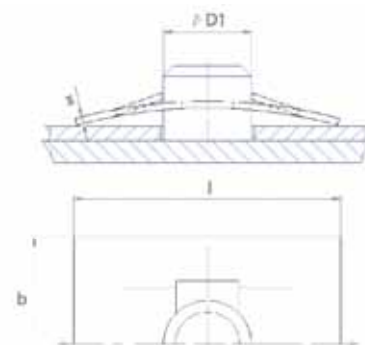


PART NO	STUD SIZE (ØD1)	OUTSIDE(ØD) DIAMETER	HEIGHT (H)	MATERIAL (S) THICKNESS	MATERIAL	PACKAGE
MOS018572002	6	20,5	2,1	0,45	CS-3250	6000
MOS019496002	8	17,5	1,8	0,5	CS-3250	8500

## SHAFT RETAINERS (Rectangular push on fix)



- ◆ To lock smooth shafts in panels or any elements with a flat surface
- ◆ The clip must be pushed onto the shaft from the top by hand or with a magnetic cylindrical hollow tool
- ◆ For smooth (not threaded) shafts in metal and plastic
- ◆ For light duty applications
- ◆ UNIT:mm

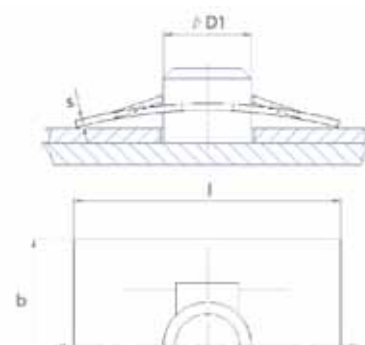


PART NO	STUD SIZE (ØD1)	LENGTH (L)	WIDTH (B)	MATERIAL (S) THICKNESS	MATERIAL	PACKAGE
MOS011513001	2	10	6	0,25	CS-5000	40000
MOS011245004	4,75	20	13,5	0,5	CS-3250	8000
MOS011330002	6	20	13	0,5	CS-3250	8000
MOS011204003	8	24	15	0,5	CS-3250	6500

## SHAFT RETAINERS (Rectangular push on fix)



- ◆ To lock smooth shafts in panels or any elements with a flat surface
- ◆ The clip must be pushed onto the shaft from the top by hand or with a magnetic cylindrical hollow tool
- ◆ For smooth (not threaded) shafts in metal and plastic
- ◆ For light duty applications
- ◆ UNIT:mm



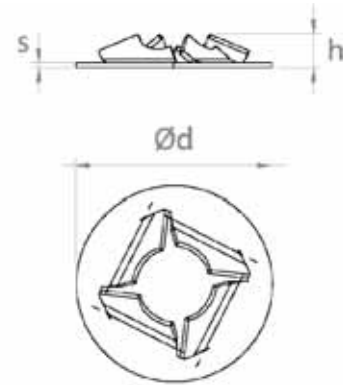
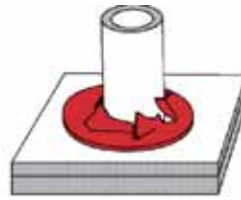
PART NO	STUD SIZE (ØD1)	LENGTH (L)	WIDTH (B)	MATERIAL (S) THICKNESS	MATERIAL	PACKAGE
MOS011748003	2,5	11	7	0,3	CS-3250	32000
MOS013730002	3	11	11	0,3	CS-3250	26000
MOS011182005	4	15	10	0,35	CS-3250	10000



## SHAFT RETAINERS (Circular push on threaded studs)

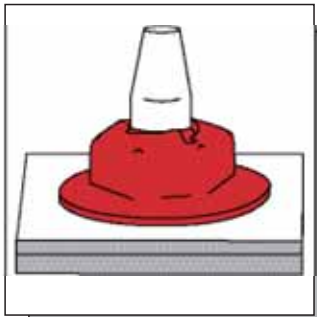


- ◆ To lock threaded metric shafts/bolts in panels or any elements with a flat surface
- ◆ The clip must be pushed onto the shaft from the top with a magnetic cylindrical hollow tool
- ◆ For metric threaded shafts in metal
- ◆ UNIT:mm

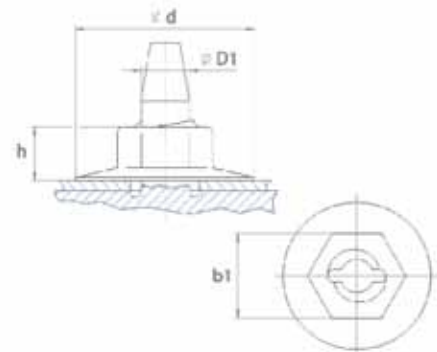


PART NO	THREAD SIZE	OUTSIDE(ØD) DIAMETER	HEIGHT (H)	MATERIAL (S) THICKNESS	MATERIAL	PACKAGE
MOS138642003	M5	11,1	1,65	0,3	CS-5000	5000
MOS151769002	M6	17	1,9	0,25	CS-3250	7000
MOS135209004	M8	15,9	2,1	0,36	CS-5000	15000
MOS138646006	M10	19,9	2,74	0,8	CS-3250	8500
MOS151857003	M12	21,4	2,9	0,38	CS-4050	3250
MOS151924001	M14	21,5	2,9	0,38	CS-4051	6000

## STAMPED NUTS (Self-Threading- For smooth pins)



- ◆ To lock smooth shafts in panels or any elements with a flat surface
- ◆ To be screwed onto smooth metal studs/shafts with a hardness of 50kg/mm<sup>2</sup> max
- ◆ UNIT:mm

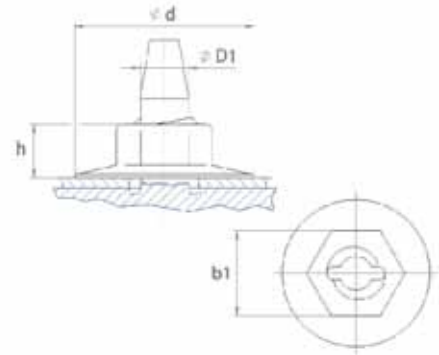


PART NO	STUD SIZE (ØD1)	OUTSIDE(ØD) DIAMETER	HEIGHT (H)	NUT SIZE (B1)	MATERIAL(S) THICKNESS	MATERIAL	PACKAGE
MOS011914007	3	13,5	4,25	8	0,5	CS-3250	6500
MOS011993004	4	14,5	4,5	9	0,5	CS-3250	5500
MOS012269005	5	14,5	4,5	9	0,5	CS-3250	5500
MOS052835008	6	15,1	5,8	11	0,5	CS-3250	8000

## STAMPED NUTS (Self-Threading- For smooth pins)



- ◆ To lock smooth shafts in panels or any elements with a flat surface
- ◆ To be screwed onto smooth metal studs/shafts with a hardness of 50kg/mm<sup>2</sup> max
- ◆ UNIT:mm

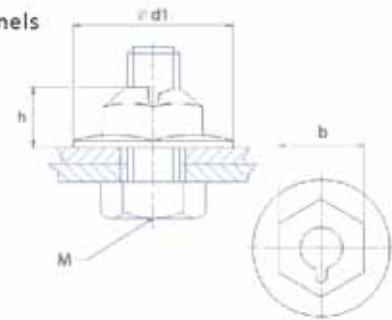
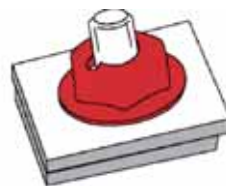


PART NO	STUD SIZE (ØD1)	OUTSIDE(ØD) DIAMETER	HEIGHT (H)	NUT SIZE (B1)	MATERIAL(S) THICKNESS	MATERIAL	PACKAGE
MOS138786013	5	15	5,4	10	0,4	CS-ZnNi	10000
MOS138802005	8	13	7,9	20	0,6	CS-3250	4000

## Stamped Nuts (Self-Locking - For threaded studs)



- ◆ To lock threaded metric shafts, studs or bolts in panels or any elements with a flat surface
- ◆ For installation with open ended or ring spanners
- ◆ UNIT:mm



PART NO	THREAD SIZE	OUTSIDE(ØD) DIAMETER	HEIGHT (H)	NUT SIZE (B)	MATERIAL (S) THICKNESS	MATERIAL	PACKAGE
MOS012604001	M4	13	5,2	9	0,4	CS-5000	7000
MOS138100000	M5	14	5,8	10	0,38	CS-3250	5000
MOS138101003	M5	14	6,4	10	0,46	CS-5000	5000
MOS012470003	M5	14,5	5	9	0,45	CS-3250	5500
MOS012148004	M6	15	6,5	11	0,55	CS-4050	7000
MOS138104000	M6	24	7,8	21	0,46	CS-4051	3000