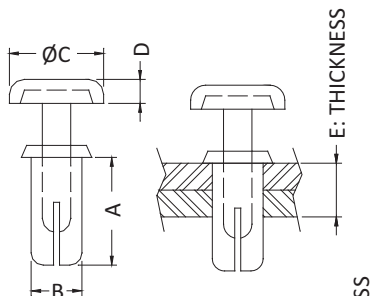


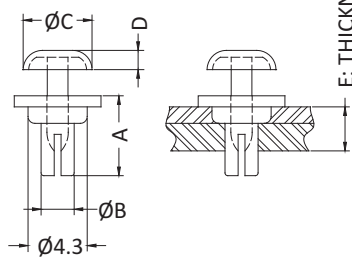
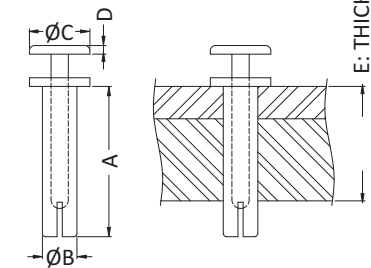


CAP. 6
Rivets
Rivetti

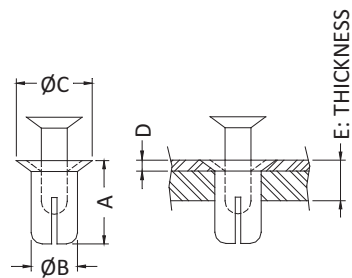
- ◆ MATERIAL: NYLON 66 (UL)
- ◆ FLAME CLASS: 94V-2
- ◆ COLOR: BLACK/WHITE
- ◆ UNIT: mm



ONLY FOR: SR2-9



ONLY FOR: SR2.5-5.8

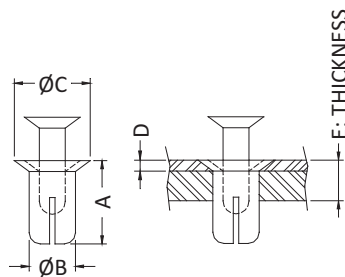
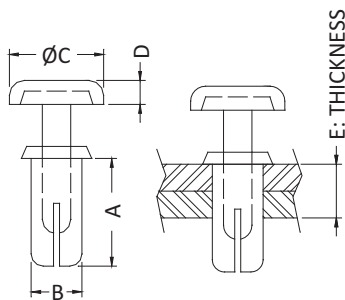


ONLY FOR
SR3-4.7F , SR3-13F

PART NO	A	B	C	D	E	MOUNTING HOLES	PACKAGE			
MOSSR232	3.2	2.0	4.2	1.2	1.3~2.0	2.0	2000			
MOSSR24	4.0		3.5	0.5	2.0~3.0					
MOSSR25	5.0		4.8	0.75	2.5~3.5					
MOSSR26	6.0				3.5~4.5					
MOSSR27	7.0				4.5~5.5					
MOSSR29	8.7	1.95	3.5	0.5	7.2	2.4				
MOSSR2558	5.8	2.4	5.0	1.4	2.2~3.2					
MOSSR2632	3.2	2.6	5.0	1.7	1.0~2.0	2.6				
MOSSR2642	4.2				2.0~3.0					
MOSSR2648	4.8			1.4	2.5~3.4					
MOSSR2655	5.5				3.0~4.3					
MOSSR2672	7.2				5.0~5.8					
MOSSR2824	24.0	2.8	6.0	1.7	18.5~19.5	2.8				
MOSSR335	3.6	3.0	6.3	1.7	1.0~2.0	3.0				
MOSSR345	4.5				2.0~3.0					
MOSSR347F	4.7				5.75			0.5	1.5~2.0	
MOSSR35	5.0				6.3			1.7	2.5~3.5	3.0
MOSSR355	5.5								3.0~3.5	
MOSSR36	6.0	3.5~4.5								
MOSSR365	6.5	4.0~5.0								
MOSSR375	7.5	5.0~6.0								
MOSSR38	8.1	5.5~6.5								
MOSSR39	9.1	6.5~7.5								
MOSSR310	10.0	7.5~8.5								
MOSSR313	13.0	6.2	10.0~11.0							
MOSSR313F	13.0	3.2		5.3		1.3	3.2			
MOSSR315	15.5	3.0	6.2	1.7	11.5~13.0	3.0				
MOSSR3185	18.5		6.3		15.0~16.5					
MOSSR3245	4.5	3.2	6.3	1.7	1.5~3.0	3.2	1000			
MOSSR3535	3.5	3.5	6.3	1.7	1.5~2.0	3.5				
MOSSR3545	4.5				2.0~3.0					
MOSSR355	5.0				2.5~3.5					
MOSSR3555	5.5				3.0~4.0					
MOSSR356	6.0				4.5~5.5					
MOSSR357	7.0				5.0~6.0					
MOSSR3575	7.5				6.0~7.0					
MOSSR359	9.0				23.0					18.5~20.0
MOSSR3523	23.0									

SNAP RIVET

- ◆ MATERIAL: NYLON 66 (UL)
- ◆ FLAME CLASS: 94V-2
- ◆ COLOR: BLACK/WHITE
- ◆ UNIT: mm

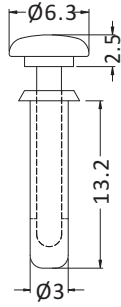


PART NO	A	B	C	D	E	MOUNTING HOLES	PACKAGE
MOSSR446	4.6	4.0	7.8	1.9	2.5~3.5	4.0~4.1	1000
MOSSR45	5.0		7.8	1.9	2.5~3.5		
MOSSR455F	5.5		5.8	0.7	3.0~4.0		
MOSSR46	6.1		7.8	1.9	3.5~4.5		
MOSSR46F			7.5	1.1	3.0~4.0		
MOSSR47	7.1		8.0	2.0	4.5~5.5		
MOSSR47F	7.2		7.5	1.1	3.5~5.0		
MOSSR47FS	7.0		6.4	0.8	3.5~5.0		
MOSSR48	8.1		8.0	2.0	5.5~6.5		
MOSSR48F	8.2		7.5	1.1			
MOSSR49	9.0		8.0	2.0	6.5~7.5		
MOSSR410	10.0		6.8	1.5	7.5~8.5		
MOSSR410F	10.0						
MOSSR412	12.0		8.0	2.0	9.5~10.5		
MOSSR413F	14.5		6.4	1.0	10.0~11.0		
MOSSR414	13.7		8.0	2.0	11.0~12.0		
MOSSR415	15.3				11.5~13.0		
MOSSR420	20.0				15.0~17.0		
MOSSR425	24.5				22.0~23.0		
MOSSR545	4.6		5.0	8.9	2.2		1.5~2.5
MOSSR545F	7.0	8.5		2.5			
MOSSR555	5.5	8.9		2.2	2.5~3.5		
MOSSR565	6.5				3.5~4.5		
MOSSR575	7.5				4.5~5.5		
MOSSR585	8.4				5.5~6.5		
MOSSR66	6.0	6.0	12.0	2.5	2.5~4.0	6.0	
MOSSR68	8.0			3.0	4.5~6.0		

ONLY FOR
 MOSSR455F , MOSSR47F , MOSSR47FS ,
 MOSSR410F , MOSSR545F,



- ◆ MATERIAL: NYLON 66 (UL)
- ◆ FLAME CLASS: 94V-2
- ◆ COLOR: BLACK
- ◆ UNIT: mm



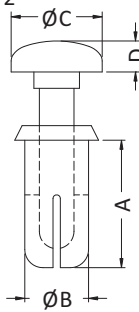
CHASSIS \varnothing 3.0
THICKNESS 10.0~11.0

PART NO	PACKAGE
MOSSRS313P	1000

SNAP RIVET



- ◆ MATERIAL: NYLON 66 (UL)
- ◆ FLAME CLASS: 94V-2
- ◆ COLOR: BLACK
- ◆ UNIT: mm



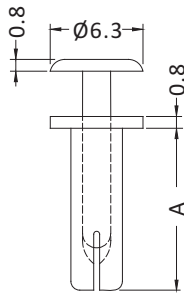
CHASSIS: \varnothing F
THICKNESS: E

PART NO	A	B	C	D	E	F	PACKAGE
MOSSRS3545P	4.5	3.5	6.3	1.7	1.5~3.0	3.2	1000
MOSSRS357P	7.0	3.5	5.0	1.7	4.5~5.5	3.5~3.6	

SNAP RIVET



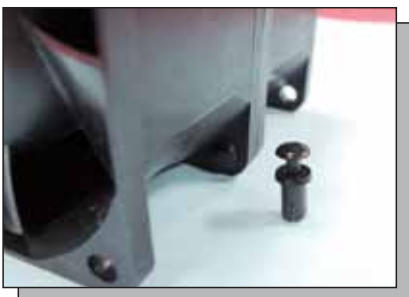
- ◆ MATERIAL: NYLON 66 (UL)
- ◆ FLAME CLASS: 94V-2
- ◆ COLOR: BLACK
- ◆ UNIT: mm



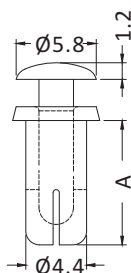
CHASSIS \varnothing 3.5
THICKNESS: E

PART NO	A	E	PACKAGE
MOSSRF3511	11.0	8.0	1000
MOSSRF3537	37.0	34.0 ^{MAX}	

SNAP RIVET



- ◆ MATERIAL: NYLON 66 (UL)
- ◆ FLAME CLASS: 94V-2
- ◆ COLOR: BLACK
- ◆ UNIT: mm

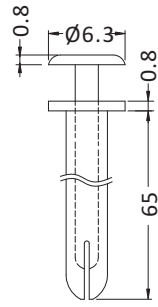


SUITABLE FOR HOLE \varnothing 4.5
SUITABLE FOR THICKNESS: E

PART NO	A	E	PACKAGE
MOSSRR458	8.0	4.2	1000
MOSSRR459	9.0	5.2	
MOSSRR4510	10.0	6.2	
MOSSRR4512	12.0	8.2	
MOSSRR4514	14.0	10.2	
MOSSRR4516	16.0	12.2	

SNAP RIVET

- ◆ MATERIAL: NYLON 66 (UL)
- ◆ FLAME CLASS: 94V-2
- ◆ COLOR: BLACK
- ◆ UNIT: mm

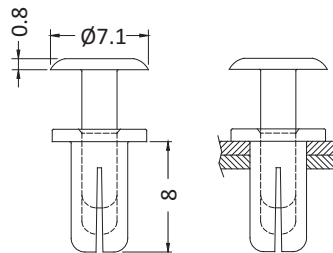


CHASSIS $\varnothing 3.5$

PART NO	PACKAGE
MOSSRF3565	500

SNAP RIVET

- ◆ MATERIAL: NYOLN 66 (UL)
- ◆ FLAME CLASS: 94V-2
- ◆ COLOR: BLACK
- ◆ UNIT: mm

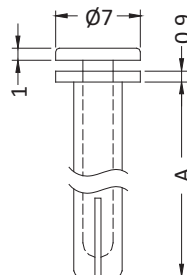


CHASSIS $\varnothing 4.0$
THICKNESS 5.5~6.5

PART NO	PACKAGE
MOSSRF48	1000

SNAP RIVET

- ◆ MATERIAL: NYLON 66 (UL)
- ◆ FLAME CLASS: 94V-2
- ◆ COLOR: BLACK
- ◆ UNIT: mm



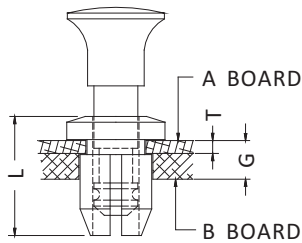
CHASSIS $\varnothing 4.0$

PART NO	A	PACKAGE
MOSSRF428	28	500
MOSSRF430	30	
MOSSRF431	31	



- ◆ CLIP MATERIAL: NYLON 66 (UL) 94V-2/
PC (UL) 94V-2
- ◆ PIN MATERIAL: NYLON 66 (UL) 94V-2
- ◆ DL-11 MATERIAL: POM (UL) 94HB
- ◆ COLOR: BLACK/WHITE/NATURAL
- ◆ UNIT: mm

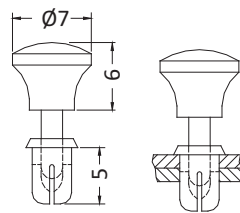
PLUNGER HEAD STYLE					
MOSDL1/DL6	MOSDL2	MOSDL3/DL4	MOSDL5	MOSDL11	MOSDL14
MOSDL10	MOSDL9	MOSDL7			



PART NO	L	T	G	HOLE		PACKAGE
				A BOARD	B BOARD	
MOSDL1	11.1	1.6	2.0~4.2	Ø7.5	Ø8.0	500
MOSDL2						
MOSDL3	10.4	1.6	2.0~4.2	Ø6.0~Ø6.1	Ø6.4	
MOSDL4	11.4	2.5	3.0~5.2			
MOSDL5	9.5	1.6	2.0~3.6	Ø4.5	Ø4.8	
MOSDL6	12.0	2.4	3.5	Ø6.6	Ø7.8	
MOSDL7						
MOSDL9	13.0	4.3	6.9	Ø6.0	Ø6.35	
MOSDL10	11.0	2.0	5.5	Ø6.0	Ø6.4~Ø6.5	
MOSDL11	10.5	1.0~1.65	2.1~4.35	Ø7.5~Ø7.6	Ø8.0~Ø8.2	
MOSDL14	11.0	2.0	5.5	Ø6.0	Ø6.4~Ø6.5	

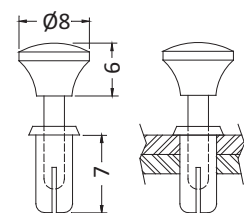
SNAP RIVET

- ◆ MATERIAL: NYLON 66 (UL)
- ◆ FLAME CLASS: 94V-2
- ◆ COLOR: BLACK
- ◆ UNIT: mm



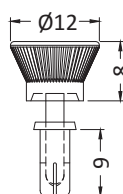
CHASSIS Ø3.5
THICKNESS 2.5~3.5

PART NO	PACKAGE
MOSSRS355P	1000



CHASSIS Ø4.1
THICKNESS 4.5~5.5

PART NO	PACKAGE
MOSSRS47P	1000

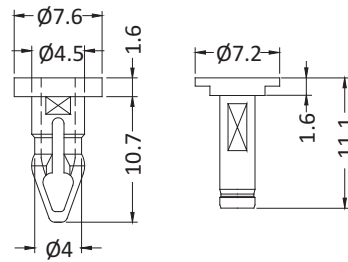


CHASSIS Ø4.1~Ø4.2
THICKNESS 6.5~7.5

PART NO	PACKAGE
MOSSRS49K	1000

SNAP RIVET

- ◆ MATERIAL: NYLON 66 (UL)
- ◆ FLAME CLASS: 94V-2
- ◆ COLOR: BLACK/NATURAL
- ◆ UNIT: mm

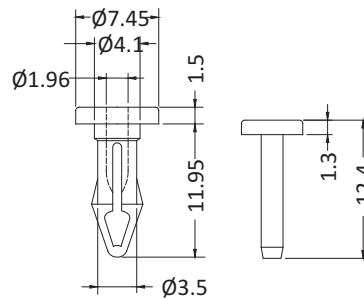


MOUNTING HOLE $\varnothing 4.6$

PART NO	PACKAGE
MOSSRCC4	1000

SNAP RIVET

- ◆ MATERIAL: NYLON 66 (UL)
- ◆ FLAME CLASS: 94V-2
- ◆ COLOR: BLACK
- ◆ UNIT: mm

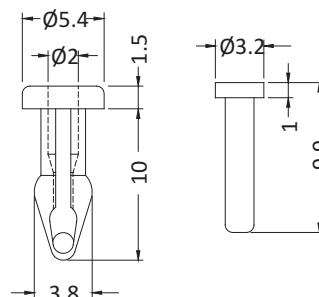


MOUNTING HOLE $\varnothing 4.1$

PART NO	PACKAGE
MOSSRCC5	1000

SNAP RIVET

- ◆ MATERIAL: NYLON 66 (UL)
- ◆ FLAME CLASS: 94V-2
- ◆ COLOR: BLACK
- ◆ UNIT: mm

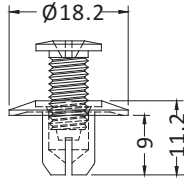


MOUNTING HOLE $\varnothing 3.0$

PART NO	PACKAGE
MOSSRCC7	1000



- ◆ MATERIAL: NYLON 66 (UL)
- ◆ FLAME CLASS: 94V-2
- ◆ COLOR: BLACK
- ◆ UNIT: mm



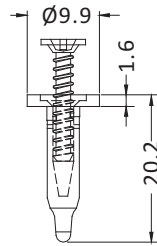
CHASSIS $\varnothing 8.0$

PART NO	PACKAGE
MOSPR1	500

SNAP RIVET



- ◆ MATERIAL: NYLON 66 (UL)
- ◆ FLAME CLASS: 94V-2
- ◆ COLOR: BLACK
- ◆ UNIT: mm



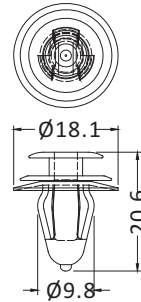
CHASSIS $\varnothing 4.5 \sim \varnothing 4.7$
THICKNESS 8.3~10

PART NO	PACKAGE
MOSPR2	1000

SNAP RIVET



- ◆ MATERIAL: NYLON 66 (UL)
- ◆ FLAME CLASS : 94V-2
- ◆ COLOR: NATURAL
- ◆ UNIT: mm



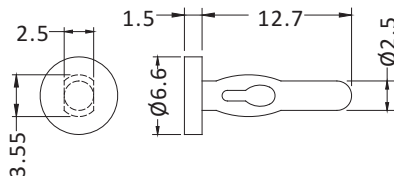
CHASSIS $\varnothing 8.0$
THICKNESS 0.8~1.6

PART NO	PACKAGE
MOSCPR10	500

SNAP RIVET

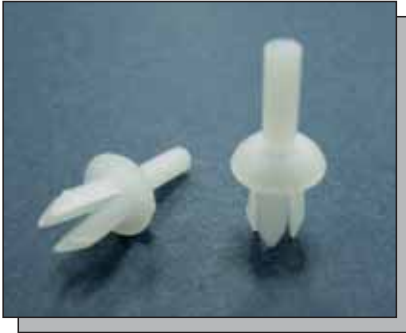


- ◆ MATERIAL: NYLON 66 (UL)
- ◆ FLAME CLASS: 94V-2
- ◆ COLOR: NATURAL
- ◆ UNIT: mm

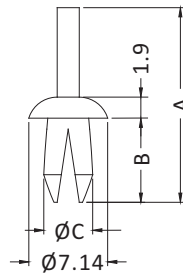


PART NO	PACKAGE
MOSPIC14	1000

SNAP RIVET



- ◆ MATERIAL: NYLON 66 (UL)
- ◆ FLAME CLASS: 94V-2
- ◆ COLOR: NATURAL
- ◆ UNIT: mm



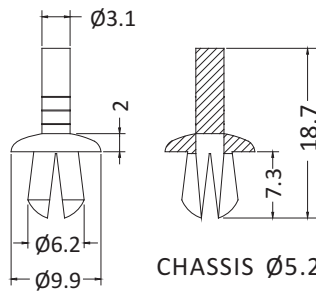
PART NO	A	B	C	D	PACKAGE
MOSPSR1	17.62	7.62	4.43	4.0	1000
MOSPSR2	16.1	7.4	6.04	4.8	

CHASSIS ØD
THICKNESS 1.57~5.53

SNAP RIVET



- ◆ MATERIAL: NYLON 66 (UL)
- ◆ FLAME CLASS :94V-2
- ◆ COLOR: NATURAL/BLACK
- ◆ UNIT: mm



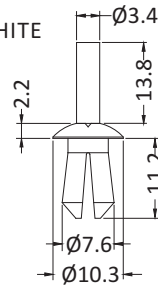
CHASSIS Ø5.2

PART NO	PACKAGE
MOSPSR57	1000

SNAP RIVET



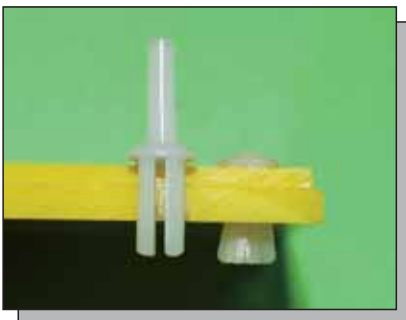
- ◆ MATERIAL: NYLON 66 (UL)
- ◆ FLAME CLASS :94V-2
- ◆ COLOR: NATURAL/WHITE
- ◆ UNIT: mm



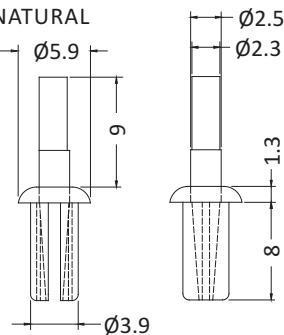
CHASSIS Ø6.0
THICKNESS 6mm Max.

PART NO	PACKAGE
MOSPSR611	1000

SNAP RIVET

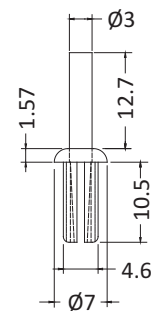


- ◆ MATERIAL: NYLON 66 (UL)
- ◆ FLAME CLASS :94V-2
- ◆ COLOR: NATURAL
- ◆ UNIT: mm



CHASSIS Ø4.0
THICKNESS 4mm Max.

PART NO	PACKAGE
MOSPSR48	1000



CHASSIS Ø4.6~Ø4.8
THICKNESS 6.5mm Max.

PART NO	PACKAGE
MOSPSR4810	1000