



CS

TYPICAL APPLICATIONS Hairdryers

FUNCTIONS ■ 2x SPST (3 positions 0-0/0-1/1-1)

CYCLE No. 50.000

CUT OUT See drawing

AMBIENT TEMPERATURE 85 °C

GWT 850 °C



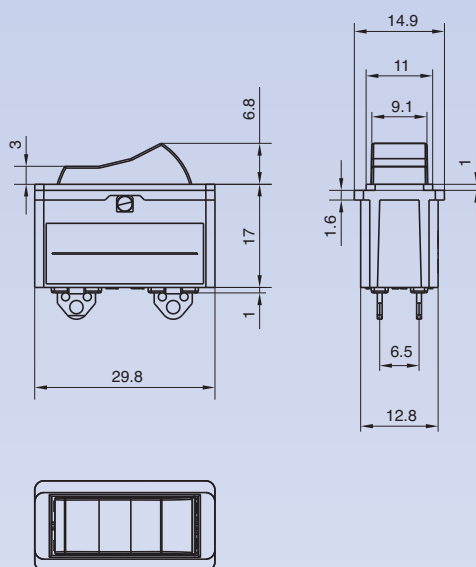
C

S

?

DRAWING

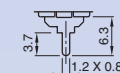
TERMINAL

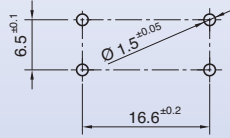
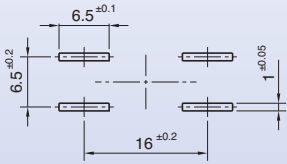


G



H





C	S	TERMINAL	FUNCTION	RATING	BODY COLOUR	BUTTON COLOUR	MARKING	MARKING COLOUR	0	0

?	?	?	?	?	?	?	0	0
---	---	---	---	---	---	---	---	---

FUNCTION **RATING** **BODY COLOUR** **ROCKER COLOUR** **MARKING** **MARKING COLOUR**

1


2

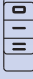
16 A / 250 VAC
 10 A / 250 VAC - 5E4
 T85/55 °C
 µ disconnection
 EN 61058

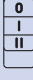
16 A / 125 VAC
 T65 °C
 UL 1054

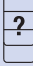
1 
 black


1 
 black


0 


A 

C 

X 

0 
 none

2 
 white

X 
 custom